



# O-TUREN 2022

Mölndals Bilsporsklubb  
2022-10-29

## O-STRÄCKA 1

Längd: 5,8 km  
Tid: 8 min

BANA Lång

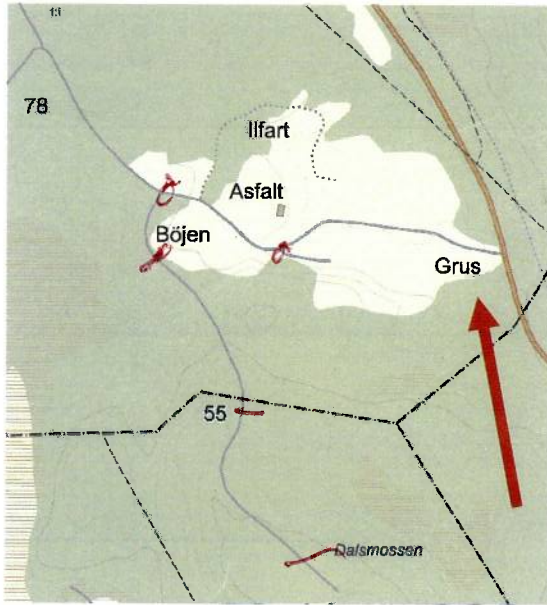
Körorder: 2  
Sida: 1/5

(2)

TK1-TK3

2

Skala 1:10 000

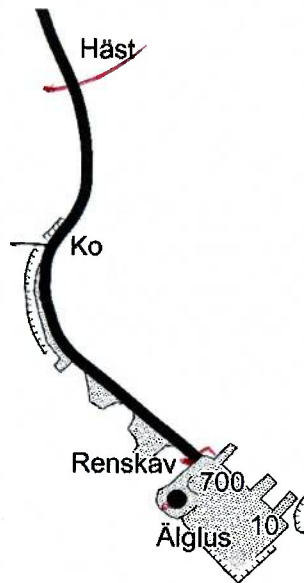


17:04:00

1:1

- TK 1 N Grus
- OK ~~N~~ mf väg S Asfalt vsk N Böjen
- SV Böjen (möte)
- O 55 (möte)
- V Dalsmossen (möte)

Skala 1:5 000 E



1:2

- O Renskäv (möte)
- A 3 mm N Äglus
- 2 mm SV 700
- gm Äglus
- 2 mm SO Äglus
- gm 10
- gm 700
- 1 mm N Renskäv
- S Ko (möte)
- OK ~~M~~ mf väg V Ko (möte)
- V Häst (möte)



# O-TUREN 2022

Mölndals Bilsportklubb  
2022-10-29

## O-STRÄCKA 1

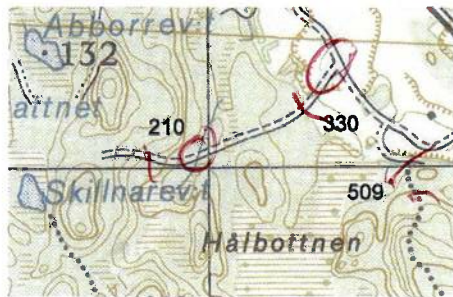
Längd: 5,8 km  
Tid: 8 min

BANA Lång

Körorder: 2  
Sida: 2/5

Skala 1:25 000

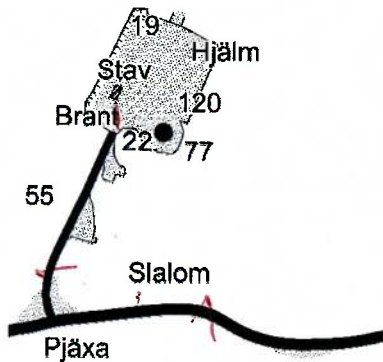
1:3



P  
O 509 (möte, stig köres)  
stigvsk NO 509  
vsk O 330 (möte)  
vsk N 330  
NV 330  
OK H bäck SO 210  
S 210

Skala 1: 5 000 E

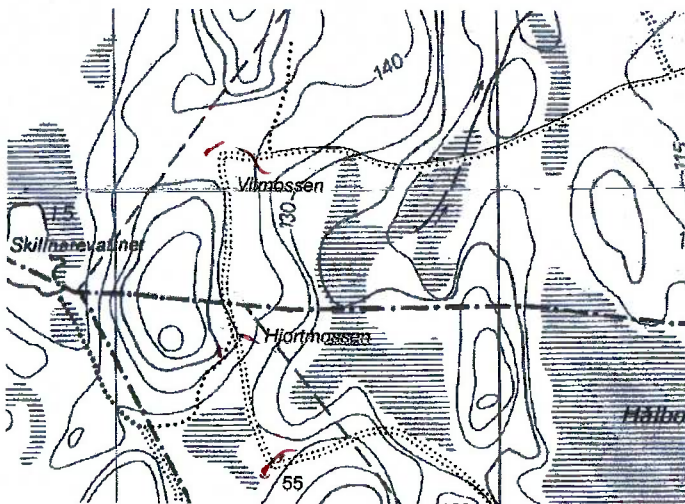
1:4



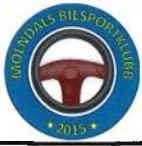
S Slalom  
V Slalom (möte)  
gm Brant (möte)  
gm 120  
gm Hjälm  
gm 19  
2 gm Stav  
1 mm VNV 77  
gm 22  
O 55 (möte)  
NV Pjäxa

Skala 1:10 000

1:5



OK T  
stigvsk N Vitmossen  
V Vitmossen  
stig V Hjärtmossen  
vägkrök NV 55



# O-TUREN 2022

Möndals Bilsporsklubb  
2022-10-29

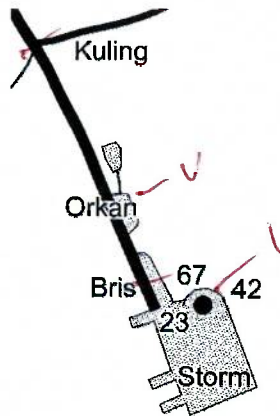
## O-STRÄCKA 1

Längd: 5,8 km  
Tid: 8 min

BANA Lång

Körorder: 2  
Sida: 3/5

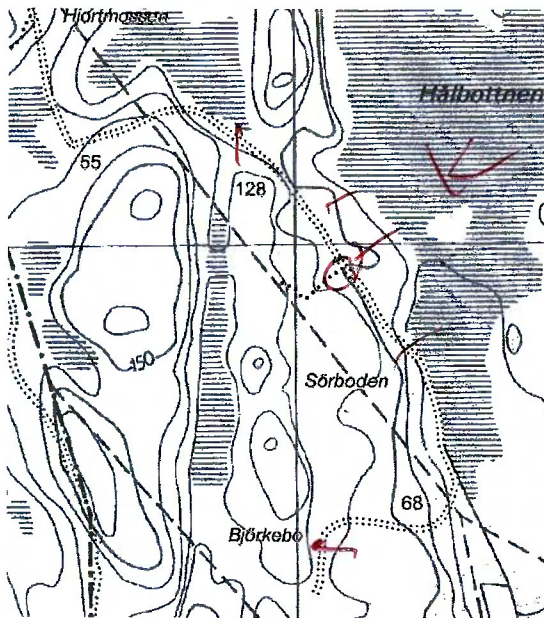
Skala 1:5 000 E



1:6

- vsk V Kuling
- gm Orkan
- O Bris (möte)
- gm 23 ✓
- 1 mm S 67 ✓
- I 2 mm VSV 42 ✓
- gm Storm ✓
- 2 mm S Storm ✓
- O Bris (möte)
- V gm Orkan ✓
- vsk V Kuling (möte)

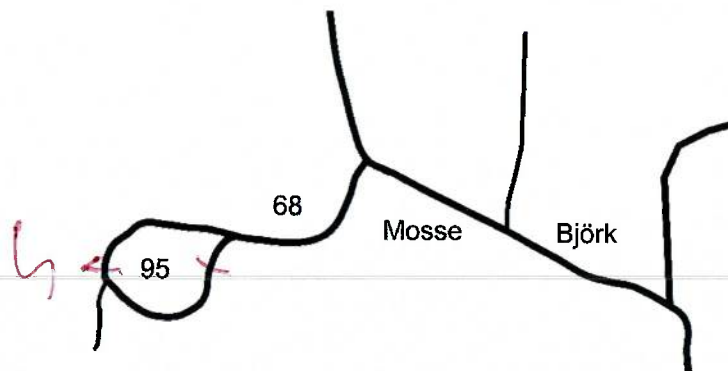
Skala 1:10 000



1:7

- vägkrök NV 55
- N 128
- OK K stig N Sörboden K
- NO Sörboden
- SO 68 (möte) ✓
- S O Björkebo

Skala 1:5 000 E



1:8

- V 95 S
- O 95 ✓
- SO 68 (möte) ✓
- vsk NNV Mosse (möte)
- TK 2 vsk O Mosse

17.12.00  
17.18.18  
6-17

Nästa sträcka är en transportsträcka. OBS, glöm inte att skriva TK i tavelkortet.  
Next stage is a transport. Remember to write TK in the control sheet.



# O-TUREN 2022

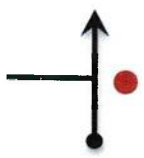


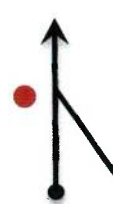









Mölnåls Bilsporthklubb  
2022-10-29

TRANSPORTSTRÄCKA 2

Längd: 16,8 km  
Tid: Max 27 min

BANA Alla banor

Körorder: 2  
Sida: 4/5

Distans		Anvisningspilar	Information	Till TK
Total	Del			
0,00	0,00	 1	 	16,78
0,94	0,94	 2		15,84
1,36	0,42	 3		15,42
1,66	0,30	 4		15,12
2,51	0,86	 5		14,27
5,31	2,79	 6		11,47
5,74	0,44	 7		11,04



# O-TUREN 2022

Mölnåls Bilsporsklubb  
2022-10-29

TRANSPORTSTRÄCKA 2

Längd: 16,8 km  
Tid: Max 27 min

BANA Alla banor

Körorder: 2  
Sida: 5/5

Distans		Anvisningspilar	Information	Till TK
Total	Del			
7,79	2,05			8,99
11,22	3,43			5,56
12,18	0,95			4,60
14,87	2,69			1,91
15,10	0,23			1,68
16,61	1,51			0,17
16,78	0,17		<p>17.38.18 → 17.45.18 17.36.05</p> 	0,00

Nästa sträcka är en O-sträcka. OBS, glöm inte att skriva TK i tavelkortet.  
Next is a orienteering stage. Remember to write TK in the control sheet.